



Cultivating Community, Conserving the Basin

Engagement Factsheet

Community Engagement Plan

The Tahoe Regional Planning Agency (TRPA) recognizes that affordable housing is vital for the health of our environment and communities. Many who live and work in the Lake Tahoe Basin are affected by the housing crisis, particularly workers who must commute in from neighboring areas and those who experience sub-standard housing conditions.

To address this, TRPA has embarked on a multiyear project to update the Lake Tahoe Regional Plan, making housing more accessible while maintaining and improving environmental protections. The *Cultivating Community, Conserving the Basin* project promotes equity and climate resilience through improved growth management and meaningful community engagement. Together, we can ensure that everyone in Lake Tahoe has access to affordable, sustainable housing in thriving communities and a healthy environment.

By engaging in regionwide conversations around Regional Plan policies, you can bring forward important changes in the Tahoe Basin to support your family, your community, and our region's future. Throughout 2024 and 2025, there will be opportunities to weigh in on updates to the growth management system.

We hope to see you soon at a neighborhood meeting, community event, TRPA meeting, or to hear from you through other opportunities. The agency is committed to making sure our engagement process is intentional and equitable so that every community member can weigh in.

Community Engagement Goals

CONDUCT AN ACCESSIBLE ENGAGEMENT PROCESS

At TRPA, we're committed to creating clear, concise, and accessible communication materials in a variety of formats. We are working to make sure participation is easy and convenient for everyone.

BUILD COMMUNITY CAPACITY AND MEANINGFUL RELATIONSHIPS

This project aims to build deeper relationships with the community. We want to hear your voice and collaborate to create a more connected future. We look forward to working together to shape our community beyond this project.

ENGAGE A DIVERSE AUDIENCE

TRPA is seeking to engage a wide array of community groups and stakeholders, particularly those with historically underrepresented voices. Your unique perspective is important to us.

CREATE A SHARED VISION

We believe our community thrives when everyone has a say. This project is about coming together to define what matters most to us as a whole. We respect the fact that there will be different perspectives. By working collaboratively, we will create a shared vision that reflects the heart of our community.

How to Get Involved

We invite all members of the Lake Tahoe community to get involved as we explore the future of our region together.

The input of community members, constituents, residents, and the Washoe Tribe is a central part of this effort.

- > Project information will be regularly updated on tahoeliving.org. Check back frequently for details on public events and opportunities to provide feedback.
- > Signup for updates to receive email notifications of upcoming meetings and events.

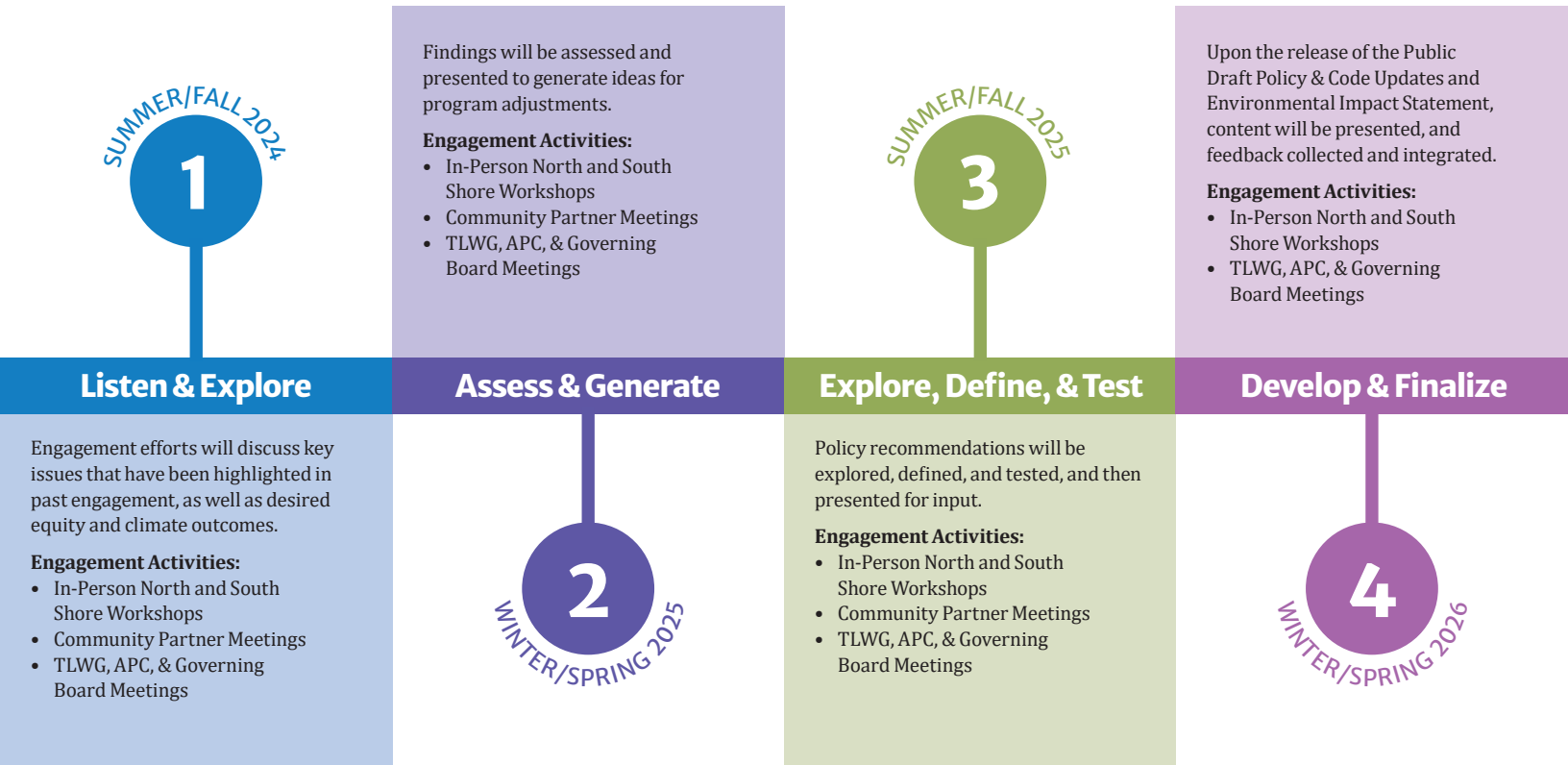
QUESTIONS?

Email Jacob Stock at: jstock@trpa.gov



Scan the QR
code to visit our
project website.

Schedule and Engagement Activities



COMMUNITY WORKSHOPS AND OPEN HOUSES

Meetings will be organized throughout each stage of the project for the purpose of updating the community and receiving feedback. **Join us at our first workshops on September 9th and 10th, 2024!** For more information, visit tahoeliving.org.

COMMUNITY PARTNER MEETINGS

Focus groups and one-on-one interviews will be conducted to understand concerns and preferences and to build relationships between TRPA and key constituencies and priority communities. Let us know if you would like to request a one-on-one meeting or session for your constituency.

TAHOE LIVING WORKING GROUP (TLWG), ADVISORY PLANNING COMMISSION (APC), AND GOVERNING BOARD MEETINGS

Presentations will be provided for the TRPA Advisory Planning Commission, Governing Board, and Tahoe Living Working Group meetings to obtain input and direction. These meetings are all open to the public and all are welcome to attend.

PRIORITY COMMUNITIES

TRPA will place a priority on engaging Priority Communities and Community Priority Zones throughout this process. Priority Communities are TRPA-defined demographic and socioeconomic groups that are historically and currently underrepresented in decision-making and/or experience economic, health, and quality of life disparities. These communities have special needs that deserve tailored approaches to engagement beyond general public outreach. These include zero vehicle households, seniors (65 years and older), persons living below the poverty line, individuals with a disability, youth (under 18 years old), and BIPOC (Black, Indigenous, and People of Color).

Community Priority Zones are TRPA-designated areas with higher densities of at least three Priority Community characteristics. Community Priority Zones include Kings Beach and Incline Village in North Lake Tahoe, Bijou, Sierra Tract, and Tahoe Verde neighborhoods of South Lake Tahoe.

